

Re-illustration of four non-marine ostracodes from "Grès Polymorphe", Congo Basin, described by Grekoff (1958)

Silvia Regina Gobbo¹, Reinaldo J. Bertini¹

¹Núcleo de Evolução e Paleobiologia de Vertebrados
Universidade Estadual Paulista "Júlio de Mesquita Filho" – Campus Rio Claro



Keywords: Tertiary, Kalahari Group, Cenozoic

The Congo Basin is very important for understanding non-marine ostracodes' faunal turnover, from Jurassic until Cenozoic. Grekoff made interesting investigations describing several ostracods from the Congo Basin (1957, 1958, 1960). "Grès Polymorphes" is the first sedimentary unity of Congo Basin in Cenozoic. Biostratigraphic studies conducted by Grekoff (1958), based on ostracodes, attributed an Eocene to Oligo-Miocene age to the "Grès Polymorphes". Colin (1994) confirmed an Eocene age based on characeans occurrences.

The subject of this work was reillustrate the samples from Grekoff Collections (Royal Museum for Central Africa – Tervuren, Belgium) using SEM images to provide references for future systematics investigations, and useful biostratigraphical and paleoenvironmental applications. The samples were composed by 3 genera and 4 species: *Cypris farnhami*; *Cypris* G. P. 542; ? *Erpetocypris* G. P. 542 and ? *Gomphocythere* L234.

Cypris farnhami is considered a good fossil index of "Grès Polymorphe". We kept the original nomenclature from Grekoff due to historical reasons. Diagnoses, catalog numbers, and dimensions were taken from the original publications.

The photographs were taken by the first author using Scanning Electron Microscope (SEM image credits: Cenpes / PETROBRAS).

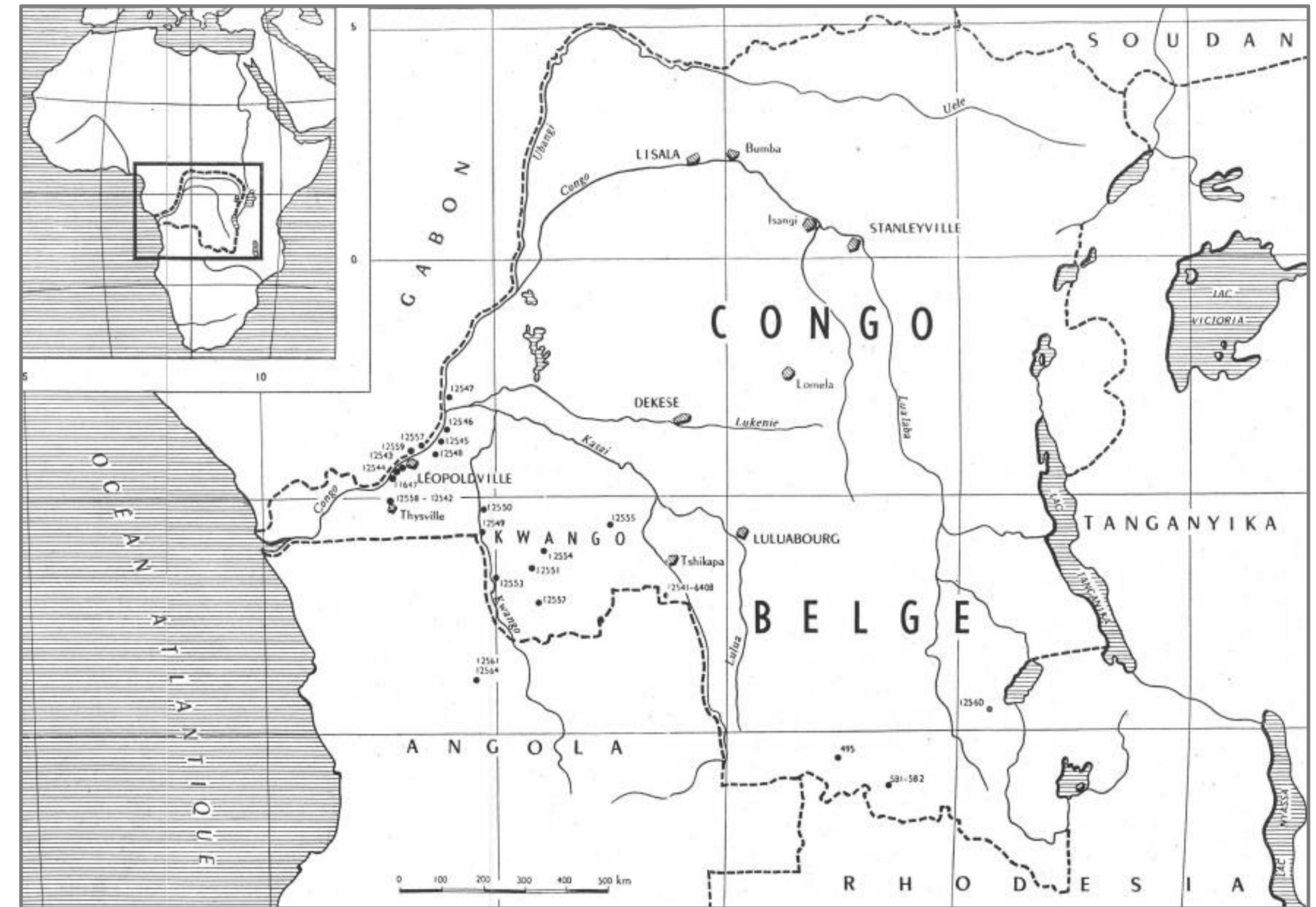
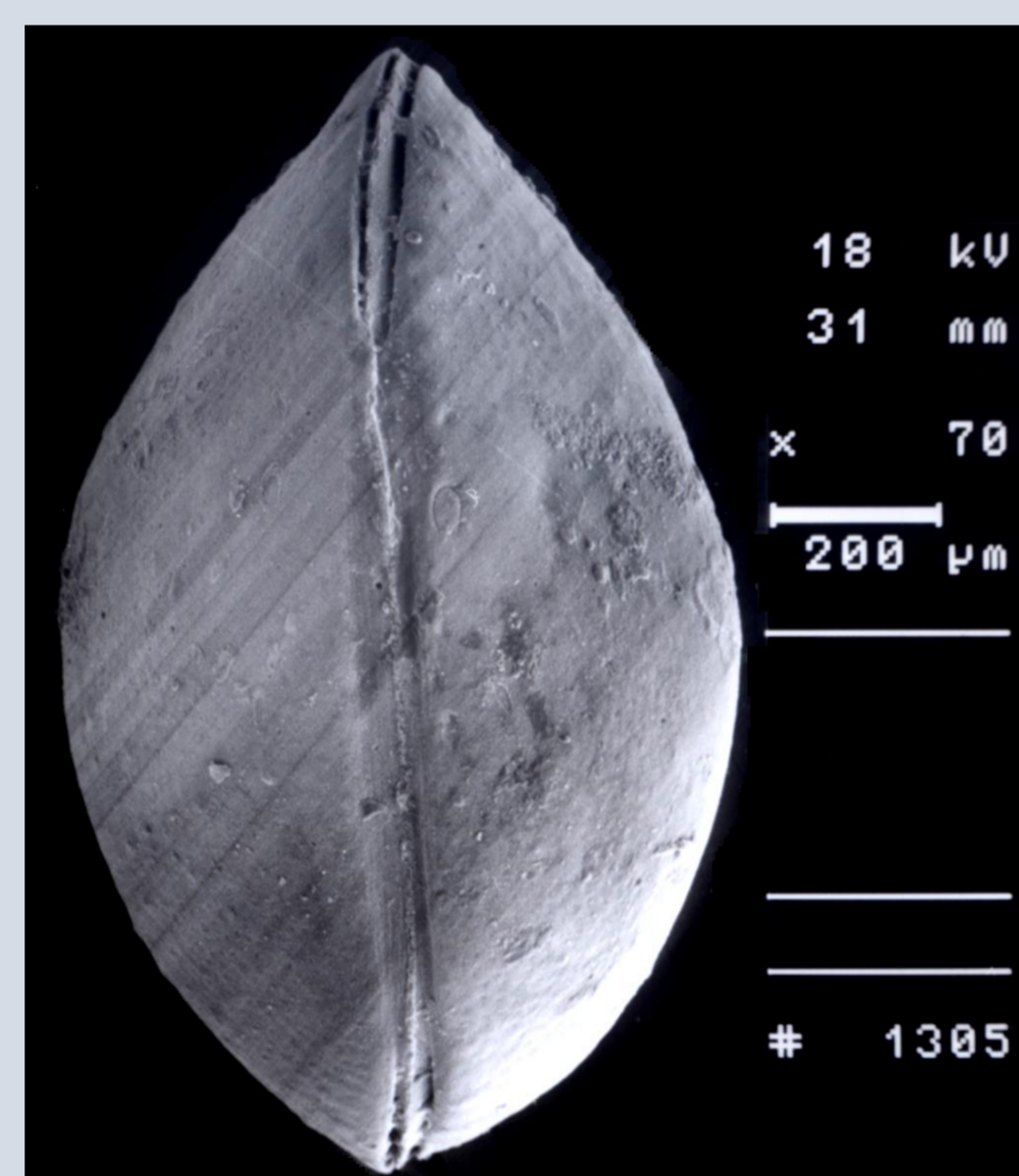


Figure 1: Congo basin and Grekoff localities (Grekoff, 1958).

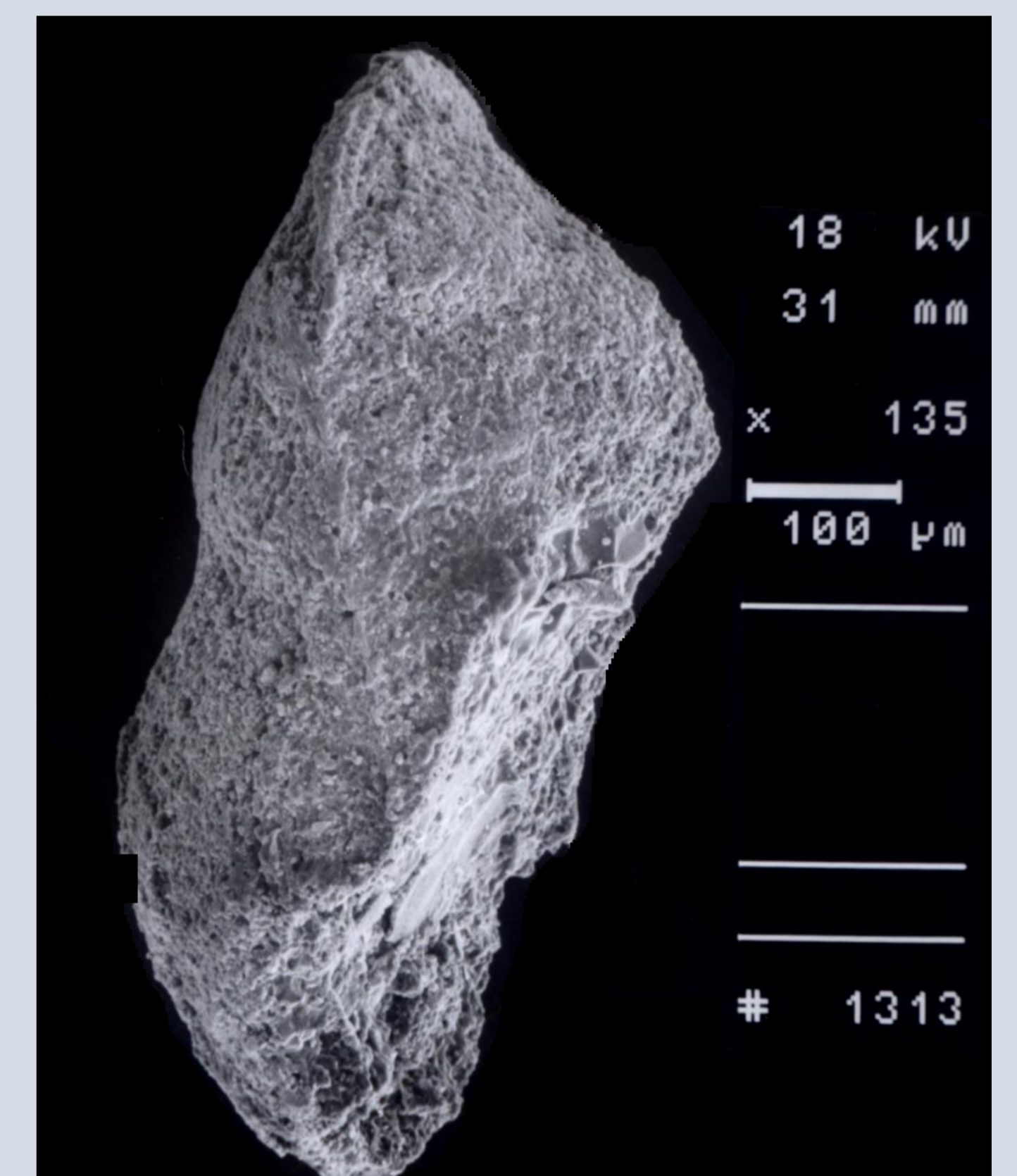
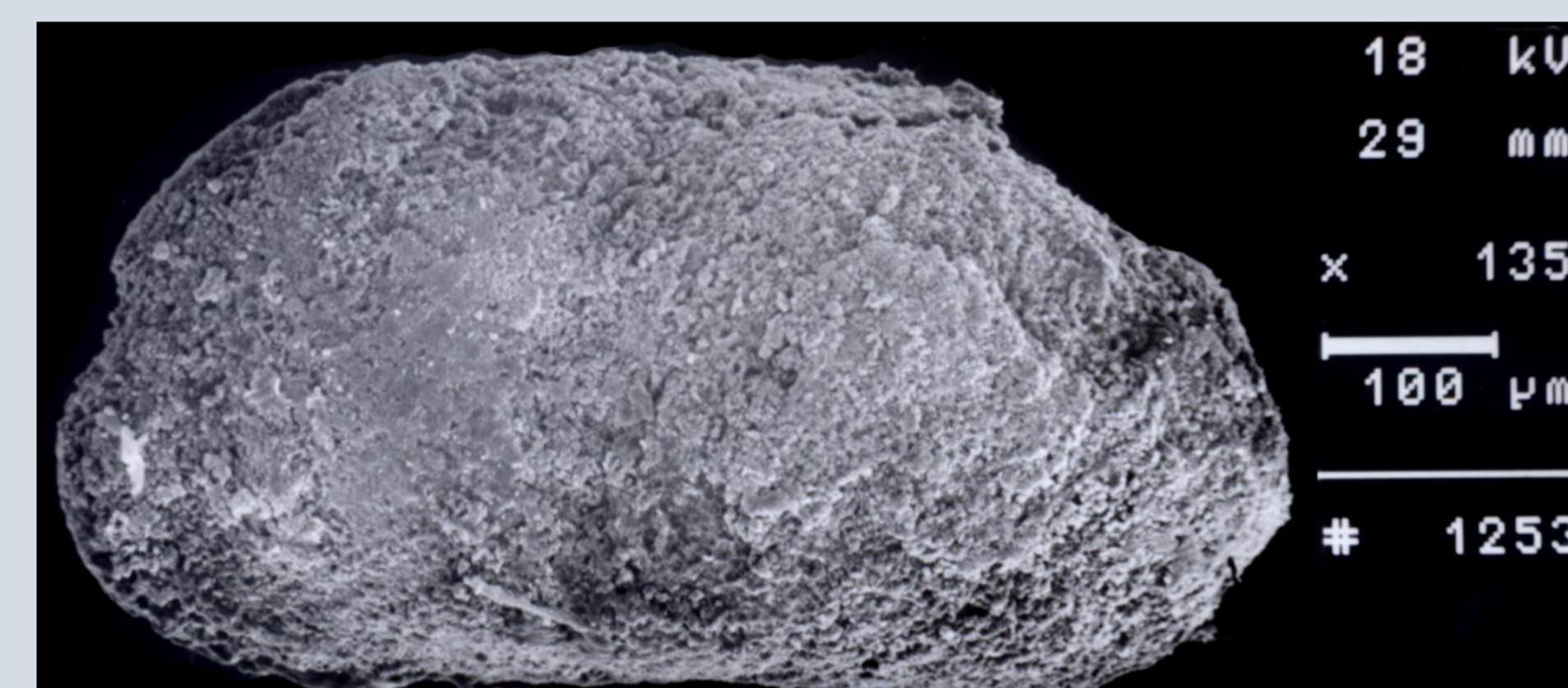


Cypris farnhami

(Originally from Grekoff, 1958, Plate II, figures 3-9)

1. Left valve view
2. Dorsal view

(2 specimens)



Gomphocythere ? L234

(Originally from Grekoff, 1958, Plate III, Figure 4)

1. Left valve view (only valve)
2. Dorsal view (only valve)



Erpetocypris ? G.P. 542

(Originally from Grekoff, 1958, Plate III, figures 14-15)

1. Right valve view
2. Dorsal view



Cypris G.P. 542

(Originally from Grekoff, 1958, Plate II, figures 10-11)

1. Left valve view
2. Dorsal view

(2 specimens)



References

Grekoff, N., 1958. Ostracodes du Bassin du Congo. 111. Tertiaire. Annales du Musée Royal du Congo Belge, 22: 1-36.
Colin J. P. (1994) Mesozoic-Cenozoic lacustrine sediments of the Zaire interior basin. In: Gierlowski-Kordesch E, Kelts K (eds.) Global geological record of lake basins, Vol 4, World and regional Geology. Cambridge University Press, Cambridge, p. 31-36.